

## Aerial Refueling Receptacle

The Aerial Refueling receptacle is designed and qualified per MIL-R-27521 for use on an F-15 Aircraft. The receptacle is mounted on an F-15 aircraft and is used to engage a flying boom from a tanker aircraft for aerial refueling.

Full engagement of the boom is indicated by an induction coil and the nozzle contact limit switch. In the fully engaged position, a hydraulic actuator will latch the boom in place upon command.

An additional limit switch senses the boom is latched. The receptacle also incorporates a relief to allow the boom to disengage with a given tension load. The receptacle also incorporates a check feature to prevent back flow.



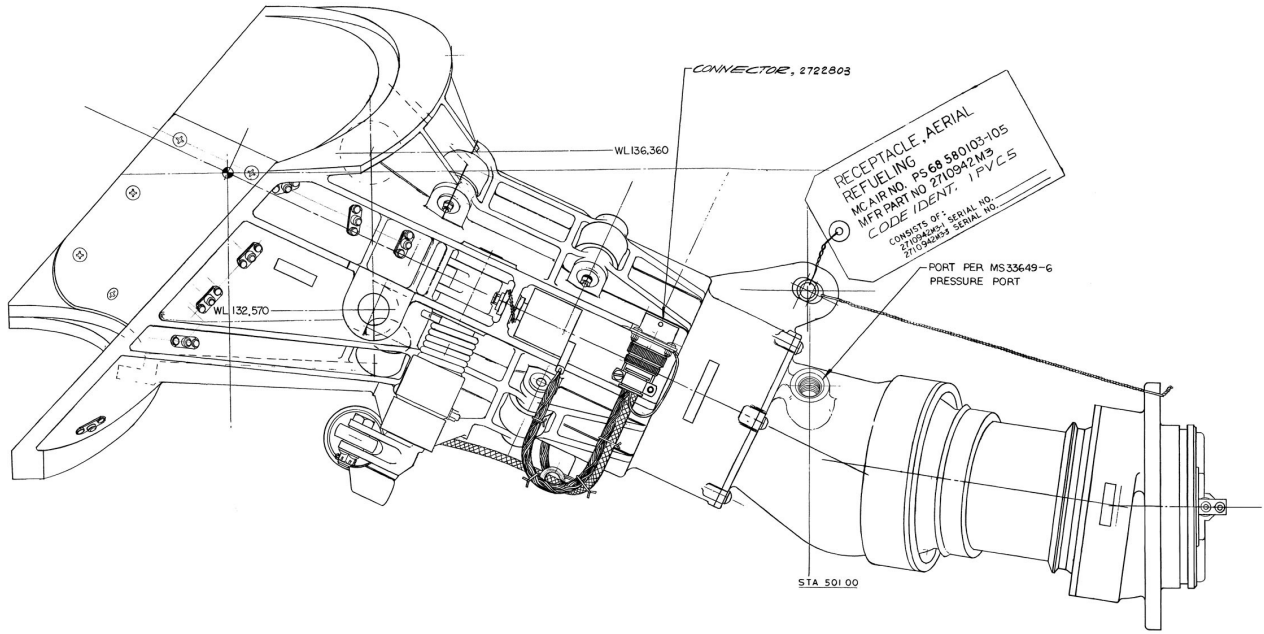
### Features

- High Flow
- Check Valve
- Integral Relief Valve
- Hydraulic Actuator with Relief
- Position Indication
- Induction Coil Sensing

### Operating Parameters

Operating Pressure .....	90 psig	Temperature .....	-65° to +160°F
Proof Pressure .....	180 psig	Temperature Hydraulic .....	-65° to +275°F
Burst Pressure .....	360 psig	Voltage .....	28 vdc
Flow Rate .....	1000 gpm	Weight .....	28.4 lb max
Pressure Drop .....	20 psid		

*Performance characteristics are based on customer requirements. As such, they are not representative of component capabilities or limitations.*



Electrical Schematic

