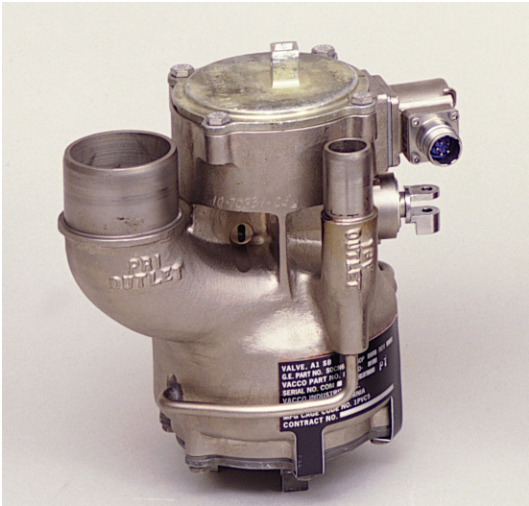


This modulating poppet valve was designed to perform dual functions on gas turbine engines:

- 1. Provide hot air flow for engine anti-ice protection.
- 2. Automatically bleed air from the engine during the starting cycle.

The valve features two independent outlets with proportionate flows between them. During starting, this unit is full open to provide maximum bleed. An engine operated cam within the valve closes the valve automatically upon completion of the starting cycle.

Actuation of a solenoid switches the valve to the anti-icing mode where a cam schedules the correct flow area for anti-icing.



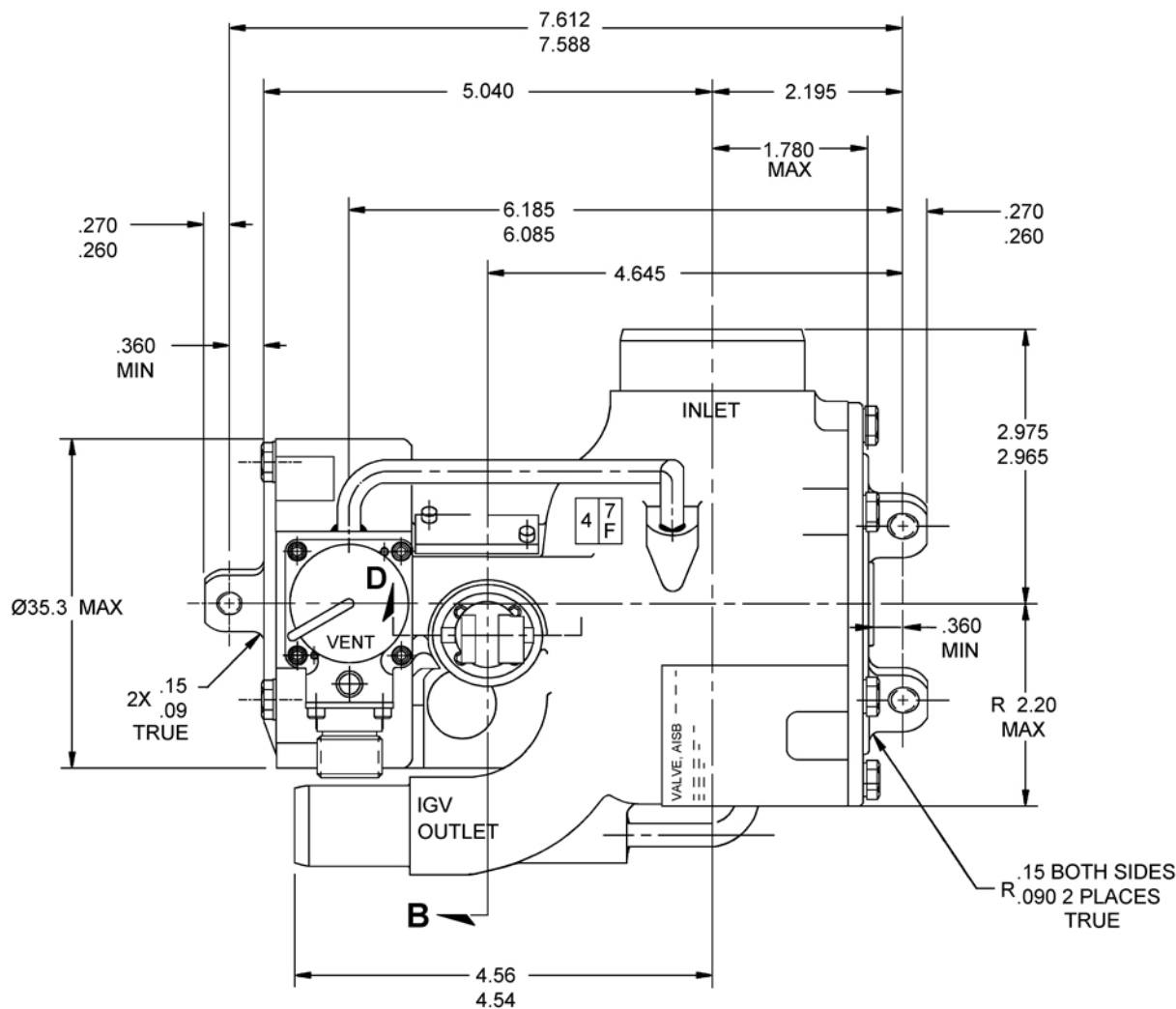
Features

- Position indication
- High temperature capability
- No lubrication required
- Lightweight; approximately 5 lbm
- Compact, long life

Operating Parameters

Operating Pressure Range	0 to 50 psig	Operating Voltage	16 to 30 VDC
Proof Pressure	100 psia	Maximum Current Consumption	1 amp
Burst Pressure	165 psia	Flow	
Media Temperature.....	-65°F to +480°F	Start Bleed	0 to 0.64 lbs/sec
Ambient Temperature Range.....	-65°F to +250°F	Anti-icing	0.34 to 0.66 lbs/sec
Operating Leakage	0.15 lbs/min	Weight.....	5 lbm
Non-Operating Leakage.....	0.45 lbs/min		

Performance characteristics are based on customer requirements. As such, they are not representative of component capabilities or limitations.



Electric Schematic

