

Aerial Refueling Receptacle

The Aerial Refueling receptacle is designed and qualified per MIL-R-27521 for use on an F-15 Aircraft. The receptacle is mounted on an F-15 aircraft and is used to engage a flying boom from a tanker aircraft for aerial refueling.

Full engagement of the boom is indicated by an induction coil and the nozzle contact limit switch. In the fully engaged position, a hydraulic actuator will latch the boom in place upon command.

An additional limit switch senses the boom is latched. The receptacle also incorporates a relief to allow the boom to disengage with a given tension load. The receptacle also incorporates a check feature to prevent back flow.



AIRCRAFT

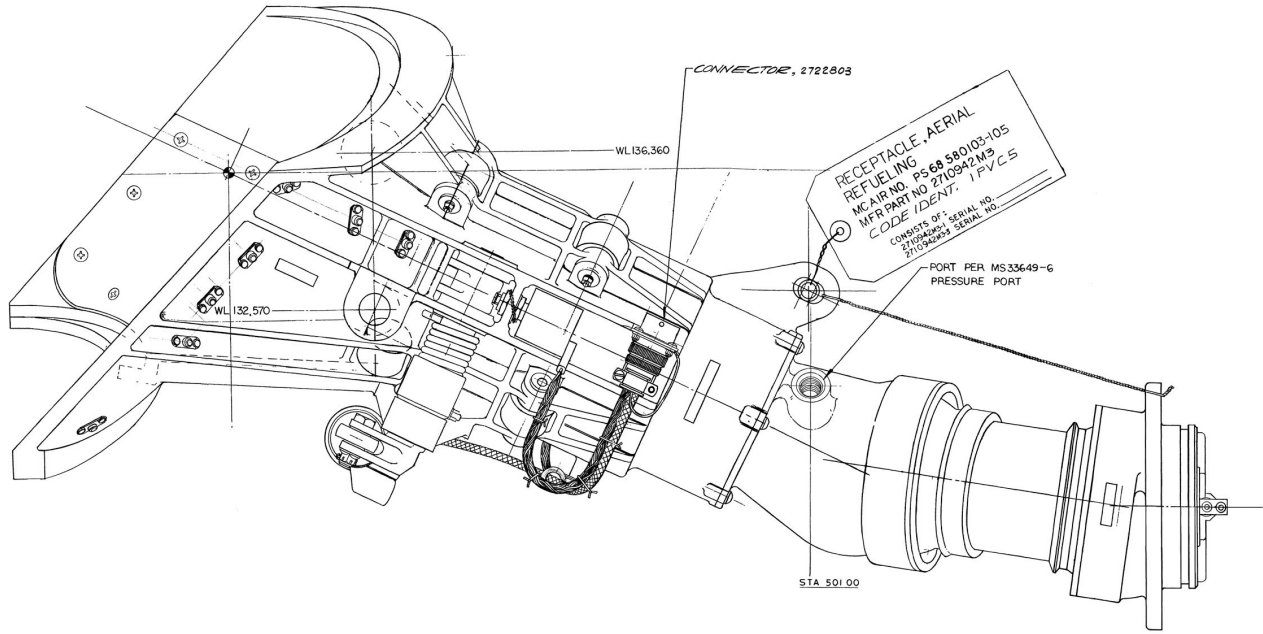
Features

- High Flow
- Check Valve
- Integral Relief Valve
- Hydraulic Actuator with Relief
- Position Indication
- Induction Coil Sensing

Operating Parameters

Operating Pressure.....	90 psig	Temperature	-65° to +160°F
Proof Pressure	180 psig	Temperature Hydraulic	-65° to +275°F
Burst Pressure	360 psig	Voltage.....	28 vdc
Flow Rate.....	1000 gpm	Weight.....	28.4 lb max
Pressure Drop.....	20 psid		

Performance characteristics are based on customer requirements. As such, they are not representative of component capabilities or limitations.



Electrical Schematic

