



F4F 030/040 MEDIUM PRESSURE SPIN-ON SERIES

FOR HYDRAULIC AND LUBE OIL APPLICATIONS

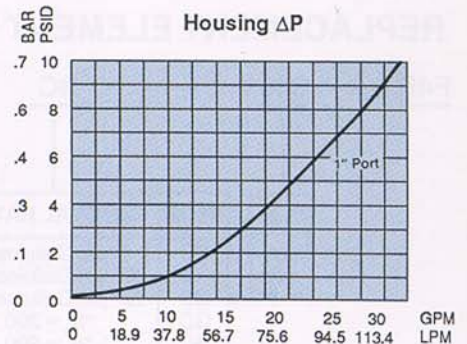
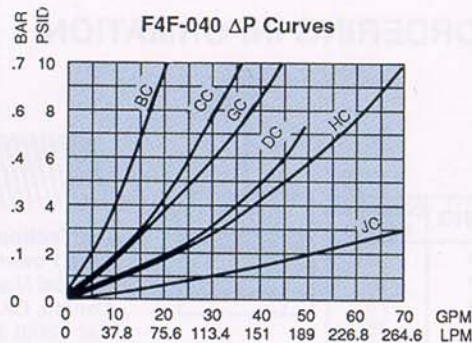
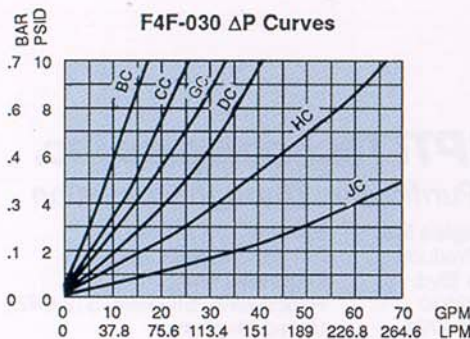
FEATURES

- 350 psi Working Pressure
- Flow to 30 GPM
- 1" Ports with NPT, S.A.E. straight thread and 4-Bolt Flange Options
- Visual ΔP Device
- Operating Temperature -40°F to $+250^{\circ}\text{F}$
- Interchangeable with Pall 7400/9540 elements
- 3-23 Micrometer removal ratings—where $\beta_x=200$
- Cost Effective

TECHNICAL DATA

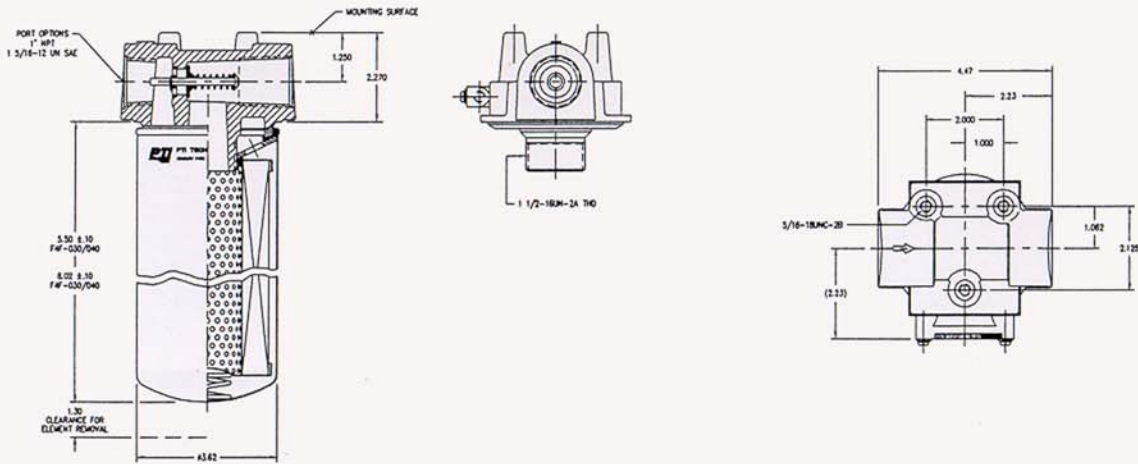
PTI Technologies F4F Series spin-ons are rated for 350 PSI operating pressure with flows to 35 GPM and are available in two (2) sizes: 30/40 models. The only difference is element length which can provide increased life and dirt holding capacity.

F4F Series elements are available in 3-25 micrometer removal ratings, with high performance micro-fiberglass Glas-Tech II[®] and cellulose media. The Glas-Tech II elements are compatible with most hydraulic fluids, including water base and phosphate ester types.

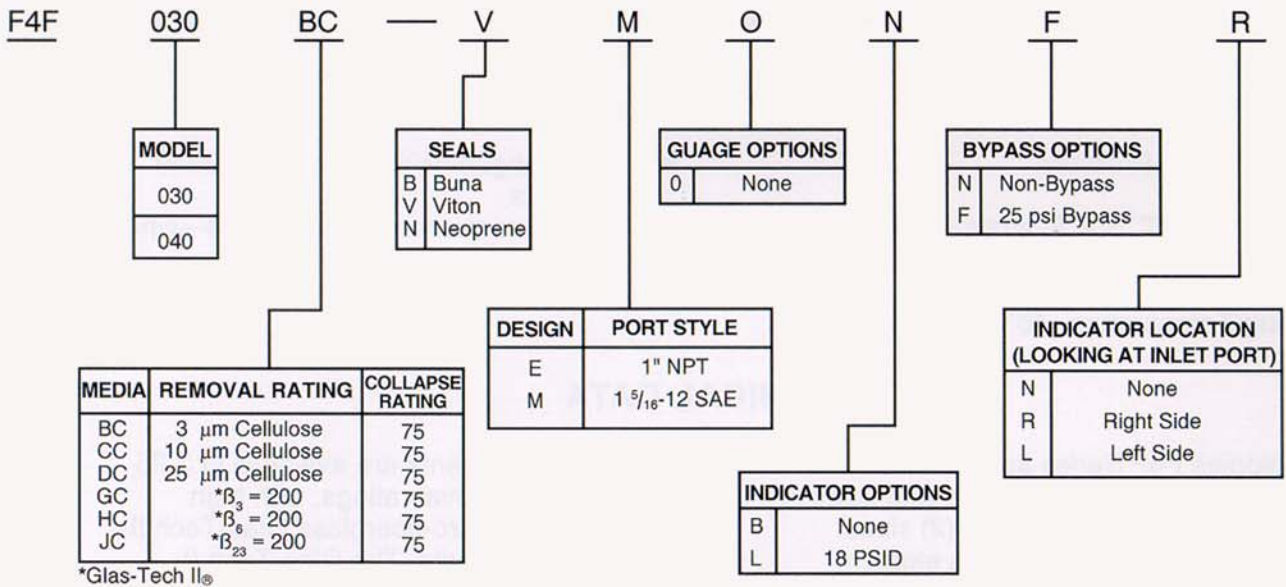


Note: Flow curves are for clean elements using hydraulic fluid with a 0.9 S.G. and viscosity of 150 SUS.

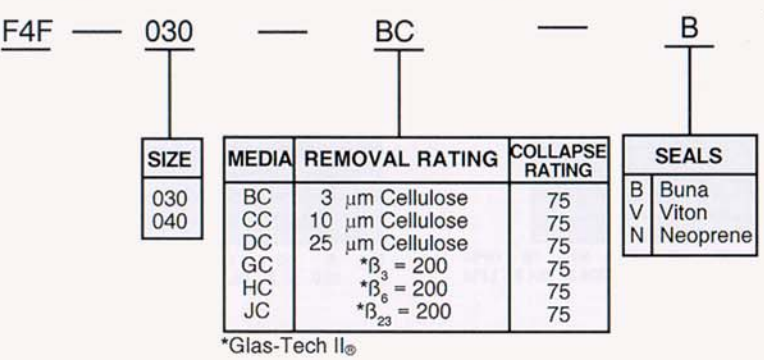
$$\text{Filter assembly PSID} = \text{Housing PSID} + \text{Element PSID}$$



ASSEMBLY ORDERING INFORMATION:



REPLACEMENT ELEMENT ORDERING INFORMATION:



PTI Technologies Inc.
 Fluid Power Products
 501 Del Norte Blvd.
 Oxnard, CA 93030
 Tel: (800) 331-2701
 Tel: (805) 604-3988
 Fax: (805) 604-3917
 filters@ptitechnologies.com
 www.ptitechnologies.com

NOTE: F4F REPLACEMENT ELEMENTS ARE INTERCHANGEABLE WITH PALL 7400/9540 ELEMENTS